



*Through the Looking Glass:  
reliving the past and revisiting the present through  
photographic heritage*

Fred Truyen, May 2016



Levels **Ground Floor**

# Virtual Museum

- It allows to navigate, walk through, view different angles, discuss and experience
- It allows to build virtual collections bringing together dispersed works
- Is not limited to physical museums
- Is an opportunity for archives and agencies who do not have museum space to showcase their collections



# Photography in the Virtual Museum

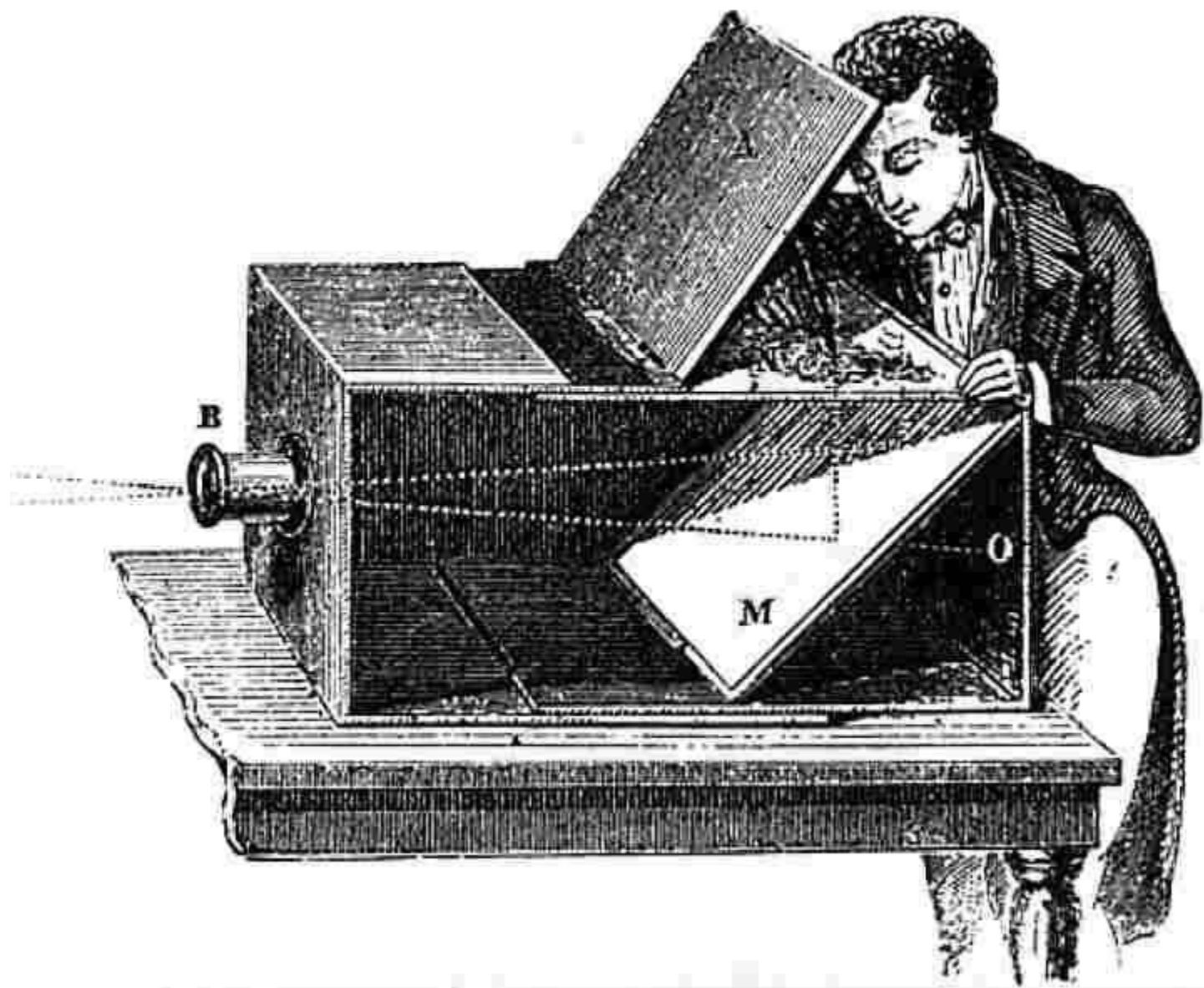


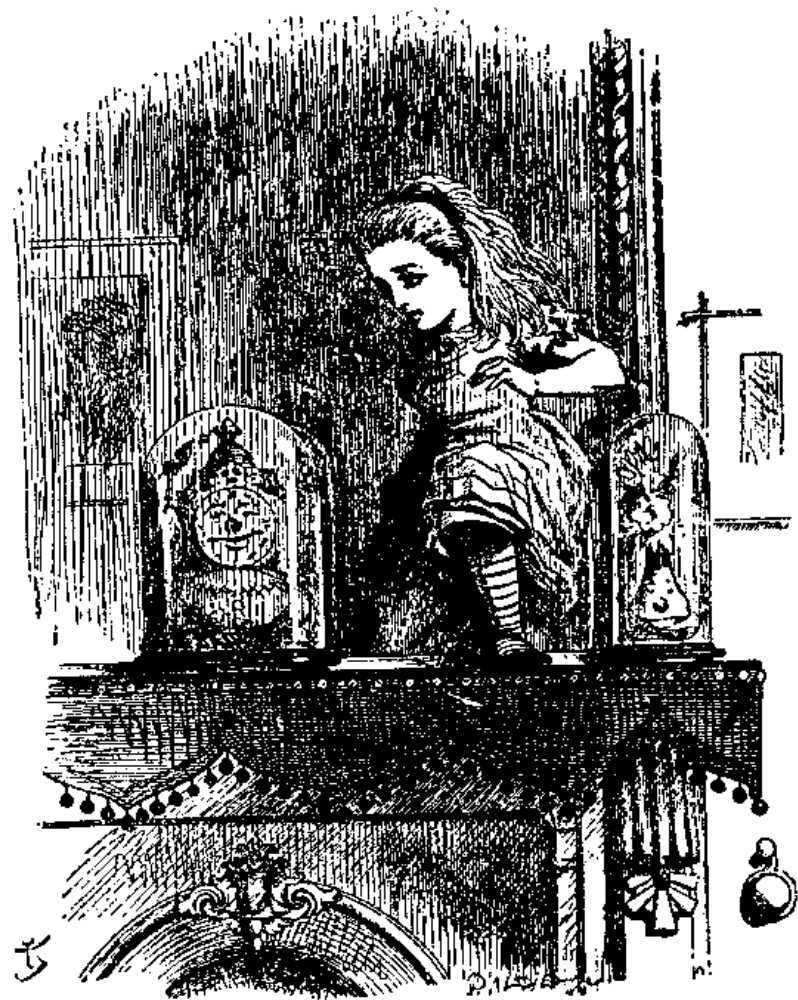
PHOTOGRAPHY <> 2D

Virtual Museum <> 3D



**Anna Maria Licko Šušteršič, ca. 1920-1924**  
The photograph shows a street scene in Ljubljana, Slovenia, during the interwar period. The image captures a person riding a bicycle on a cobblestone street, with a brick wall and a staircase in the foreground. The photograph is a historical document, likely used for documentation or artistic purposes.









© National Geographic/Getty Images



Now, Kitty, let's consider who it was that dreamed it all. This is a serious question, my dear, and you should not go on licking your paw like that—as if Dinah hadn't washed you this morning! You see, Kitty, it must have been either me or the Red King. He was part of my dream, of course—but then I was part of his dream, too! Was it the Red King, Kitty? You were his wife, my dear, so you ought to know—Oh, Kitty, do help to settle it! I'm sure your paw can wait!





[www.elenakalisphoto.com](http://www.elenakalisphoto.com)

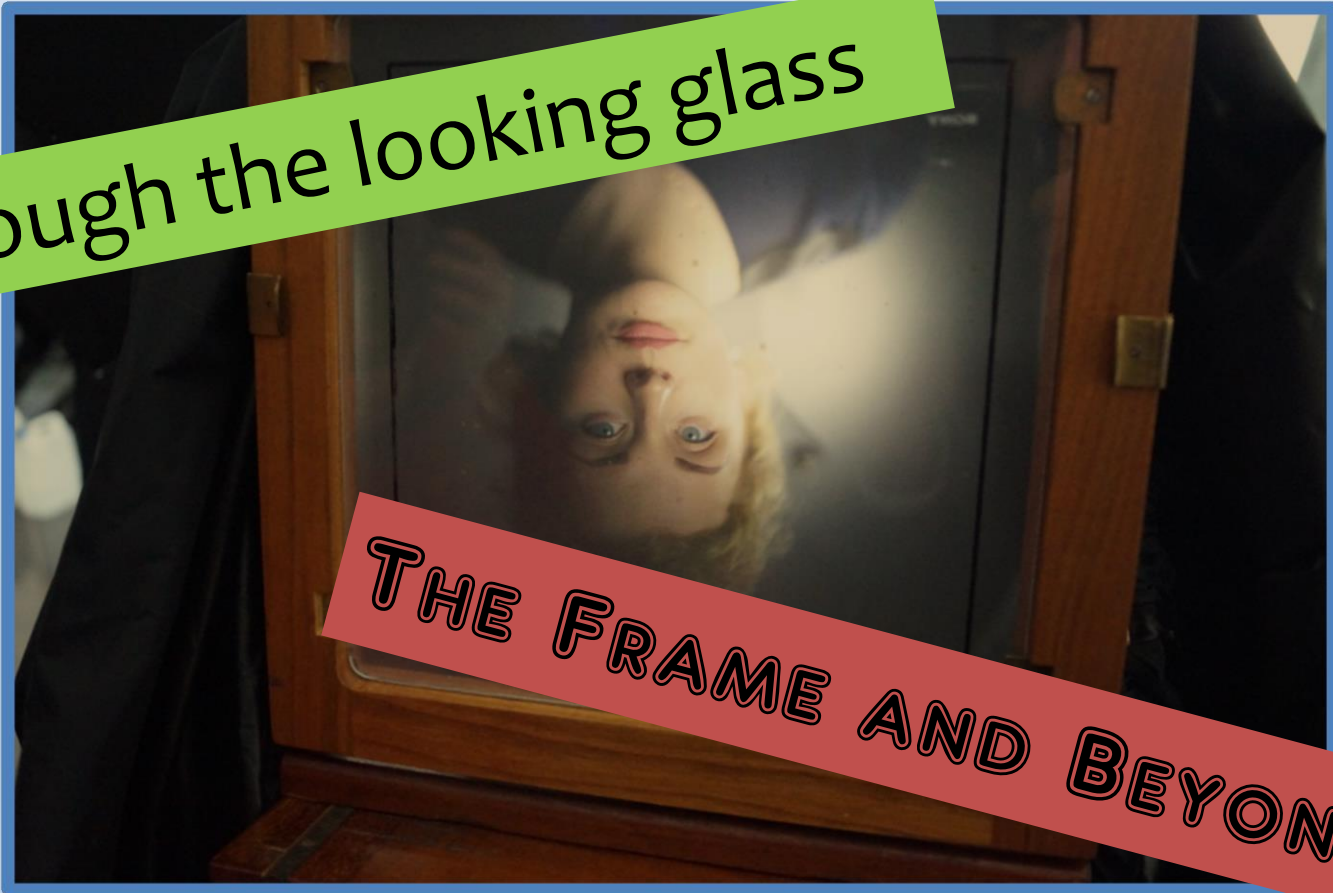
ElenaKalis

UNDERWATER  
PHOTOGRAPHY

elenakalis

# Photographic Archetype

Through the looking glass



THE FRAME AND BEYOND







SKINNER



# Trompe l'oeil

The painting is not what is on the canvas,  
but what you see on the canvas

**DIGITISATION  $\neq$  REPRODUCTION**



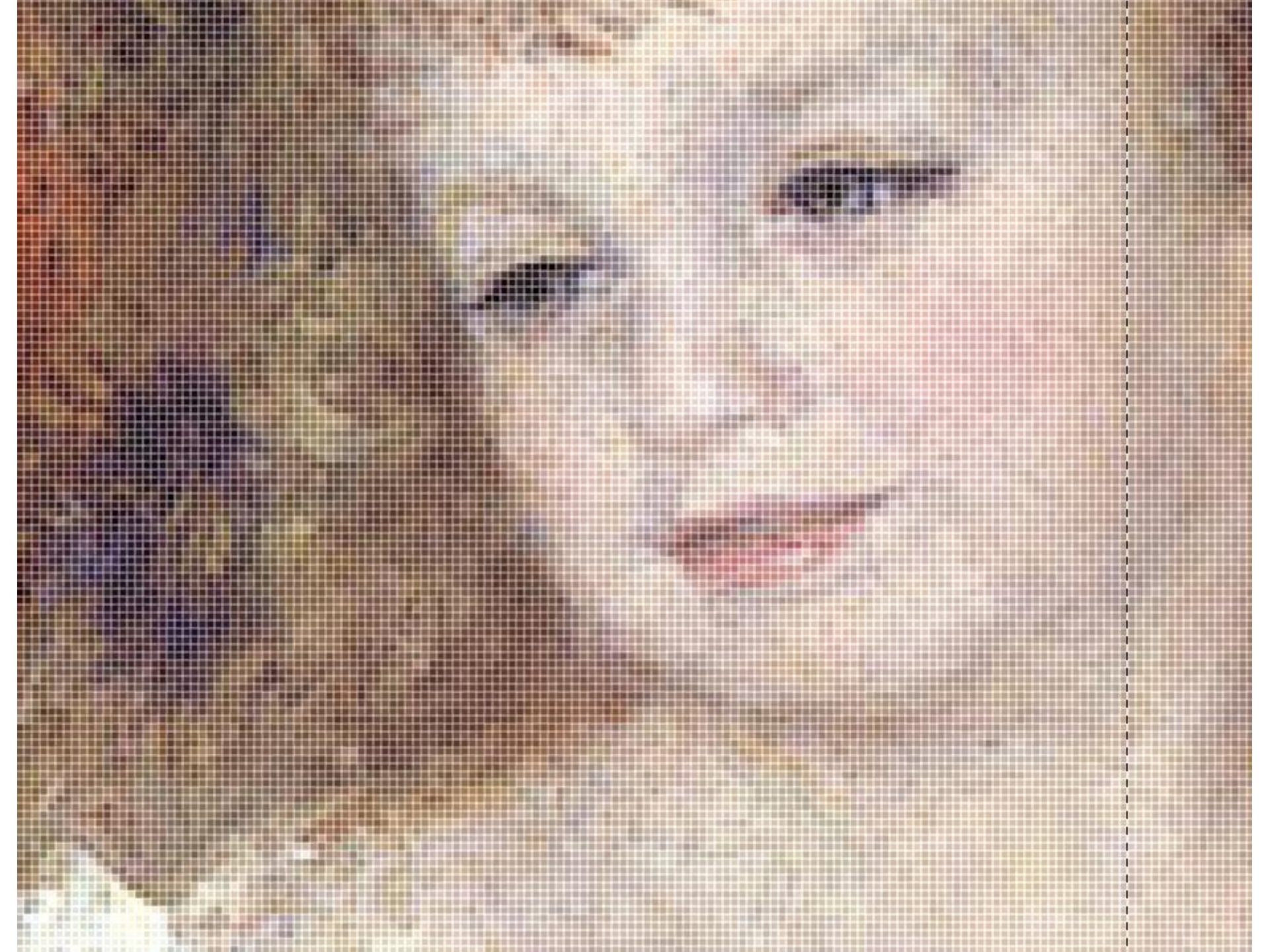




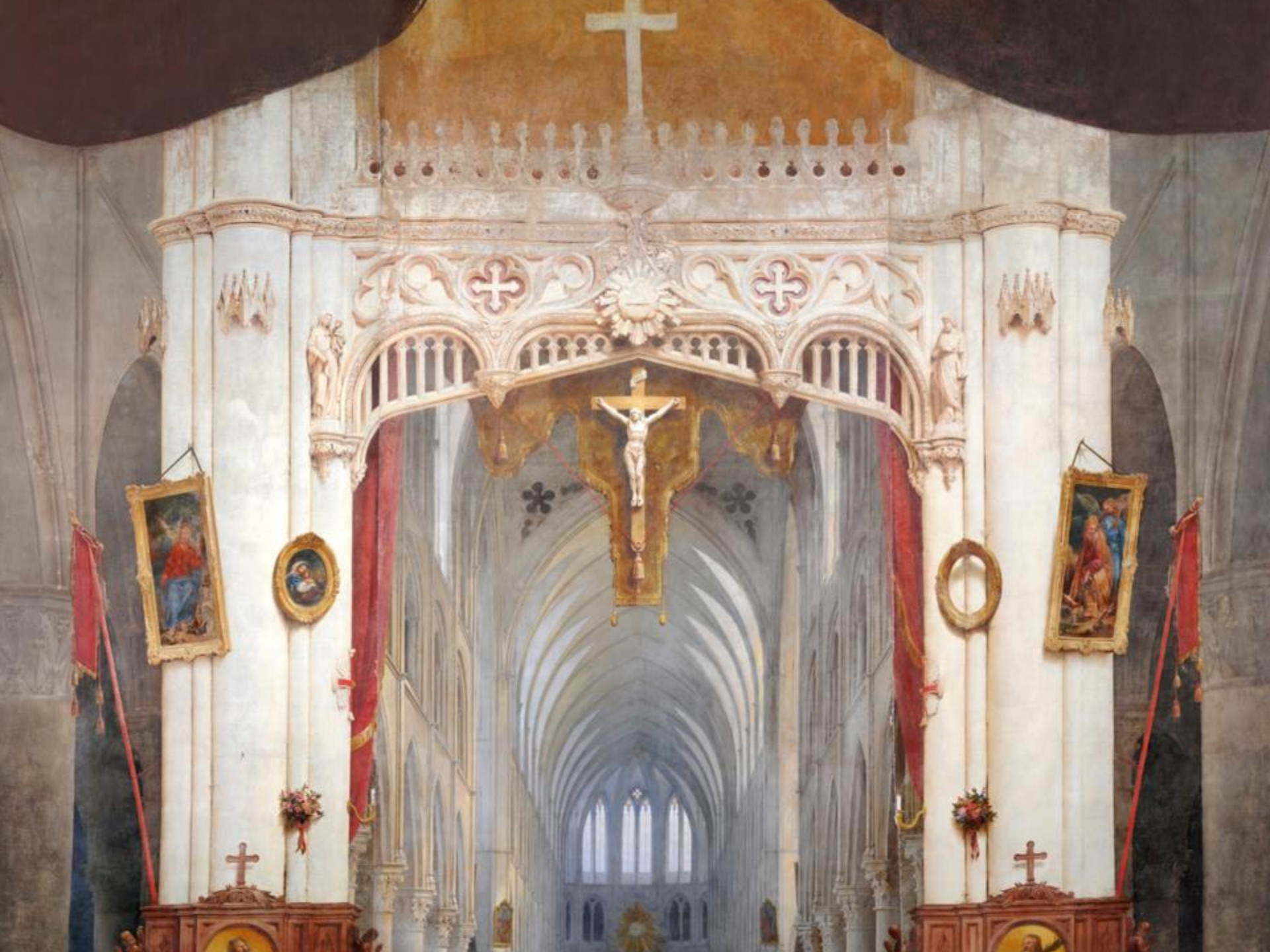












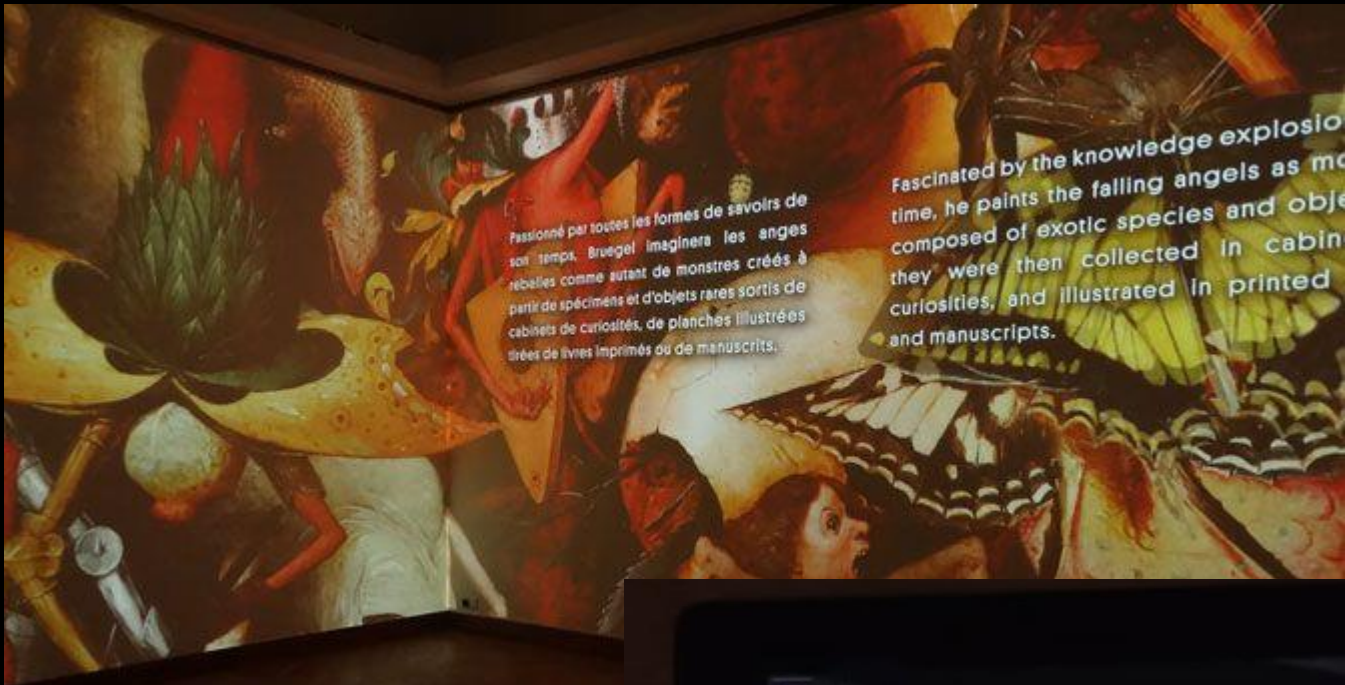




# The Virtual Museum

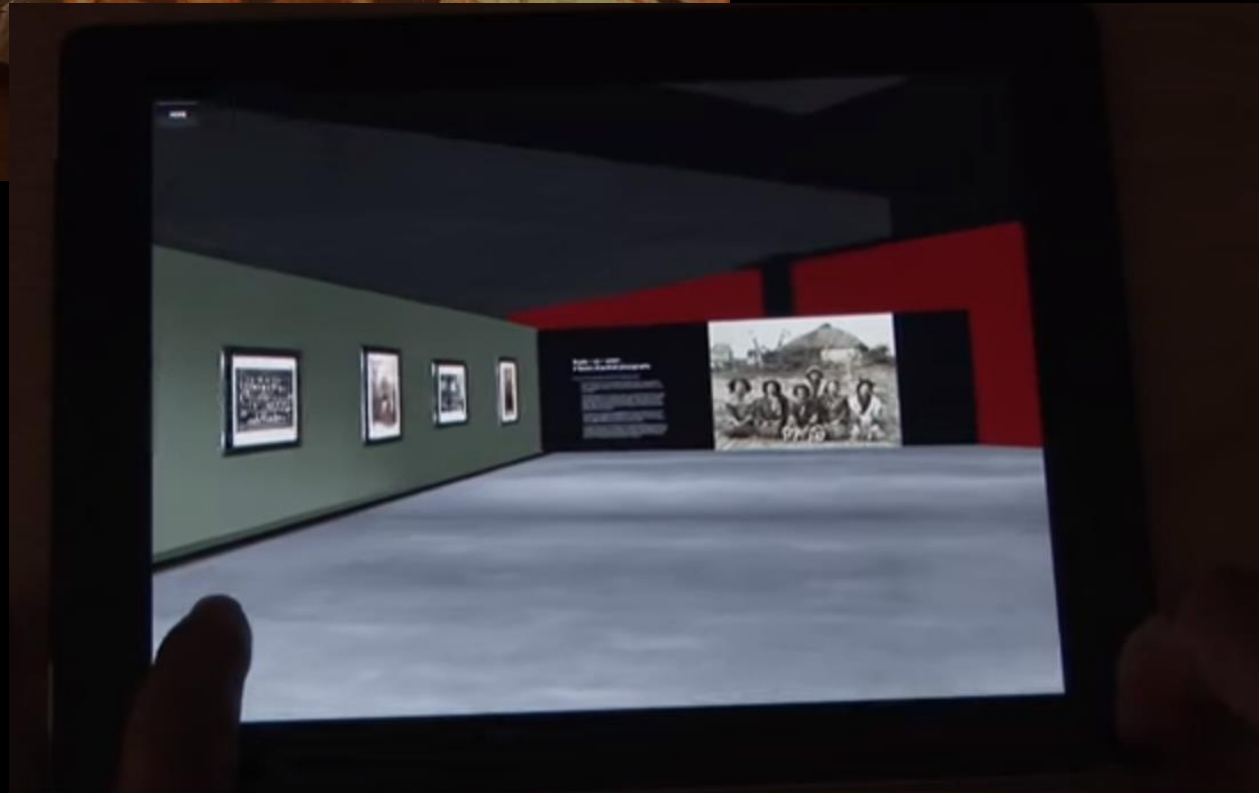
3D Spaces  
Scale, Framing & Distance

2D TEXTURES  
LIGHT, REFLECTANCE,  
ILLUSION



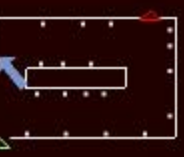
Passionné par toutes les formes de savoirs de son temps, Bruegel imaginera les anges rebelles comme autant de monstres créés à partir de spécimens et d'objets rares sortis de cabinets de curiosités, de planches illustrées tirées de livres imprimés ou de manuscrits.

Fascinated by the knowledge explosion of his time, he paints the falling angels as monsters composed of exotic species and objects that they were then collected in cabinets of curiosities, and illustrated in printed books and manuscripts.



Text on the black panel, likely describing the gallery or the works on display.







# The Death of Germanicus

Nicolas Poussin (French, 1594-1665)

Gallery 313

ABOUT

DETAILS

MORE

## 1 Echoes of the Past

## 2 Family in Mourning

Germanicus's grief-stricken wife, Agrippina, is surrounded by three of their six children and their nurse, the youngest ones shown as cherubic in their naked innocence. The boy in blue would become the vile emperor Caligula, known for his brutality and excess.

## 3 Avenging a Friend

## 4 The Stages of Grief



# 1900



1901  
**In the gardens** +



1901  
**Field day at Marie-Antoinette's Estate** +

# THE COLLECTORS

Searchers, secrets and the power of curiosity

Start your journey



1. THE CURIOUS GARDENER



2. MERCHANTS OF LIGHT



3. THE DEATH COLLECTOR



4. THE UNCEASING SEEKER



5. THE 'OBSCENE' DOCTOR



6. THE IGNORANT BRIDE





Outside Looking In, Mobile, Alabama (1956)  
by Gordon Parks  
High Museum of Art

This photograph was originally published in a groundbreaking Life Magazine photo essay by Gordon Parks, which exposed Americans to the effects of racial segregation. Parks focused his attention on a multigenerational family from Alabama. His photographs captured the Thornton family's everyday struggles to overcome discrimination.



Gordon Parks's choice of subject matter sets his series of photographs of a family living under segregation in 1956 Alabama apart from others of the period. Rather than focusing on the demonstrations, boycotts, and brutality that characterized the battle for racial justice, Parks emphasized the prosaic details of one family's life. His ability to elicit empathy through an emphasis on intimacy and shared human experience made them especially poignant.

Department Store, Mobile, Alabama (1956)  
by Gordon Parks  
High Museum of Art





Levels **Ground Floor**

Art Gallery of New South Wales



[View on Google Maps](#)



Hide floorplan



- 1
- B1
- B2
- B3





### The Ghent Altarpiece



Select a panel, or click here for more information.

#### Open

Closed

#### Macrophotography

- Infrared macrophotography
- Infrared reflectography
- X-radiography

#### Extras

- Quatrain
- Extreme close-ups
- Cleaning tests
- Copy of Just Judges
- Reports

#### About

- The project
- Documentation methods
- Dendrochronology
- Project participants 2010-12
- Project participants 2012-17
- Using images from this site
- Web credits

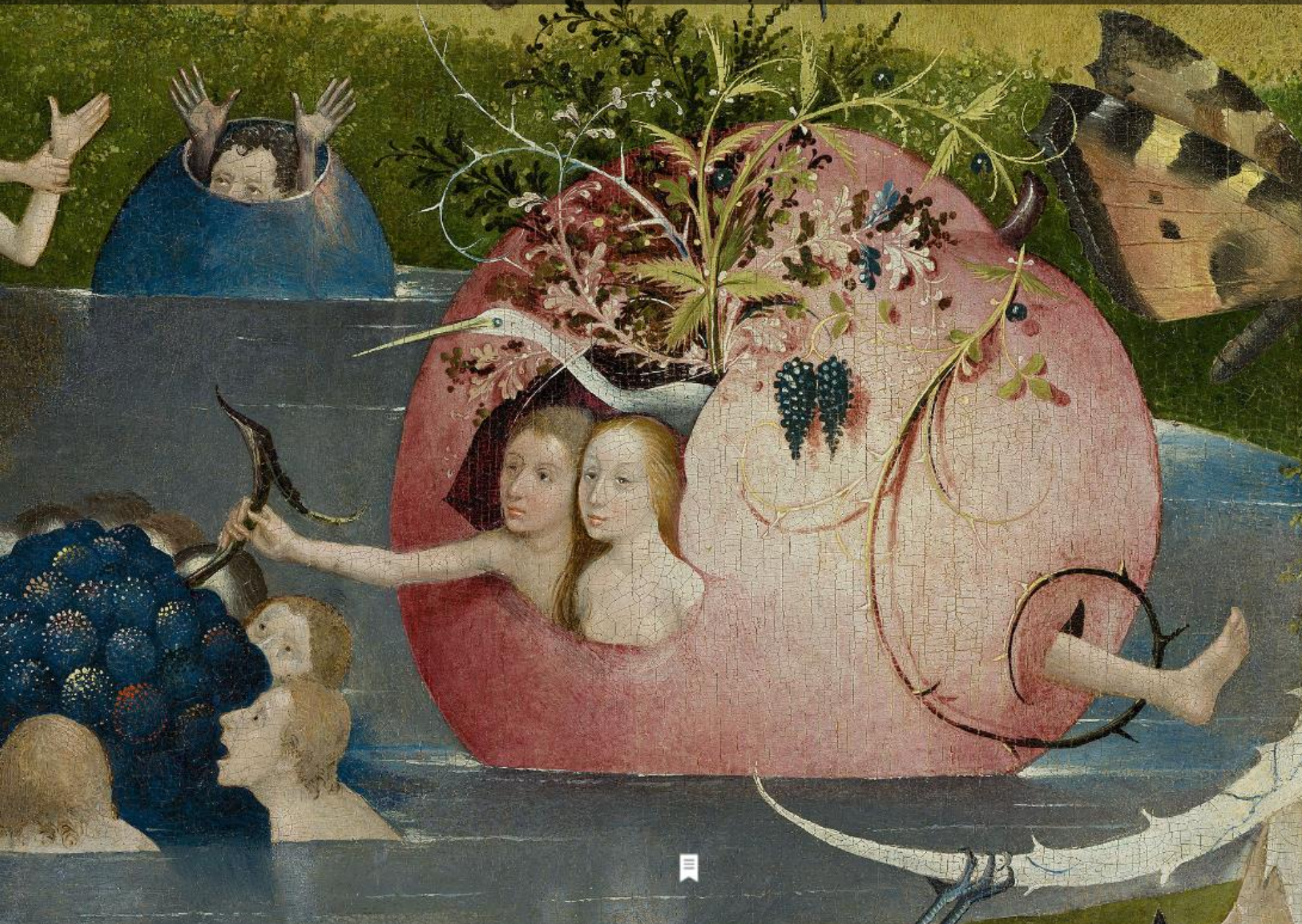




i

**Closer to Van Eyck**  
Rediscovering the Ghent Altarpiece





# Beyond the pixel

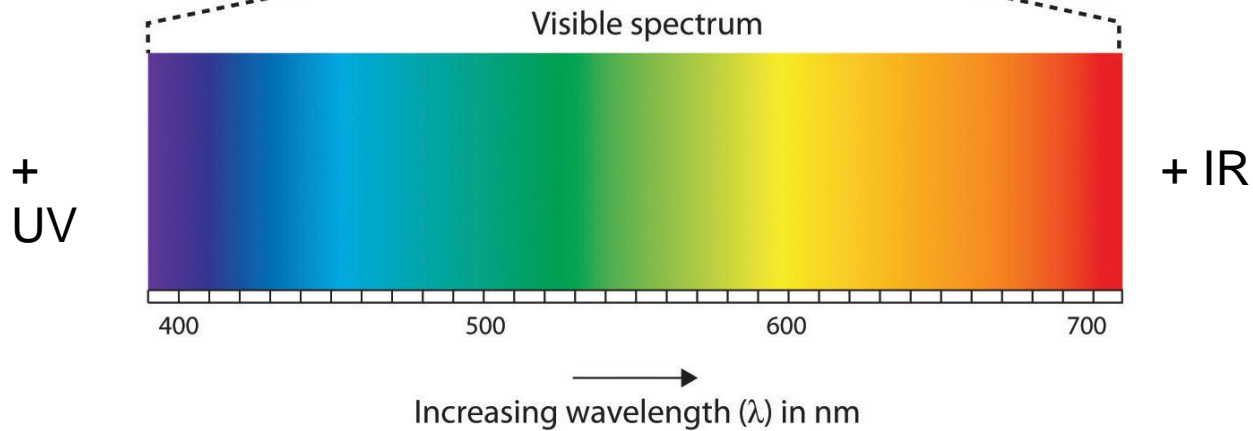
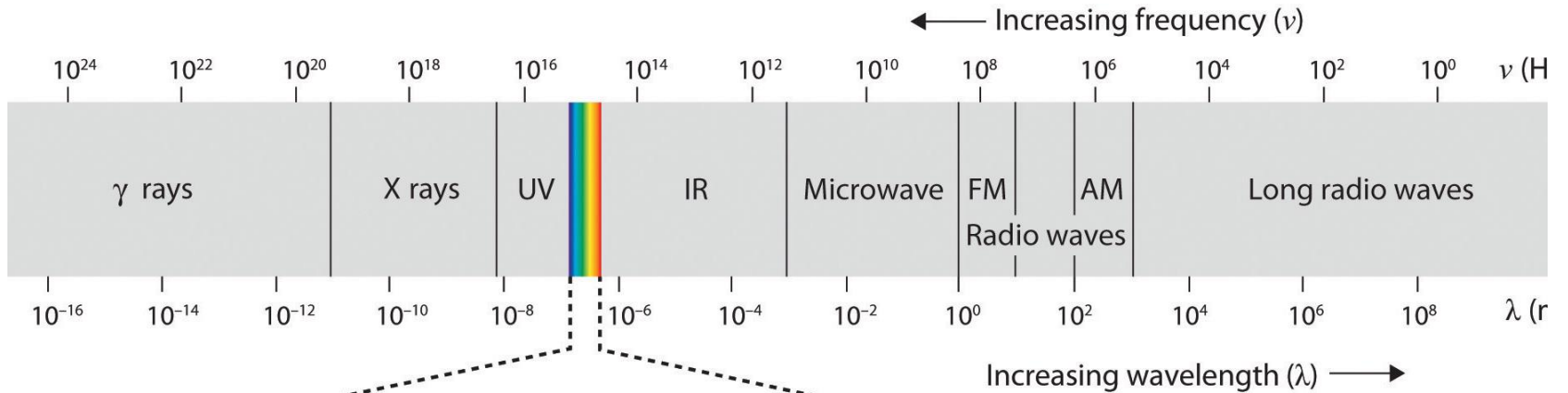
From geometry  
to algorithm

ANTI-ALIASING  
DITHERING  
ANISOTROPIC FILTERING

Closer to Van Eyck



# Visual Spectrum







VIS



IR 850 nm



UV 365 nm



VIS



IR 850 nm



UV 365 nm

data directory = D:\RICH\Acquisition



Metadata Display Measure Params

Display Settings

Color source: Ambient

Albedo  Ambient

Color layer:  IRG  IGB  RGB  RGU  GBU  
 I  R  G  B  U

Shader: color

color  sharpen  
 shaded  shaded exaggerated  
 sketch 1  sketch 2  
 curvature  normals  
 color specular  BRDF materials

Normal layer:  NI  NR  NG  NB  NU

Intensity 1: [Slider]

Intensity 2: [Slider]

Display 1:1

Fit to Window

Screenshots

Zoom: [Slider]

Dimension: 1514x907

Background Color: [Color Picker] [Reset]

Take screenshot Take 1:1 snapshot

Print screenshot Create movie

data directory = D:\RICH\Acquisition



Metadata Display Measure Params

Display Settings

Color source: Ambient

Albedo  Ambient

Color layer:  IRG  IGB  RGB  RGU  GBU  I  R  G  B  U

Shader: color

color  sharpen  shaded  shaded exaggerated  sketch 1  sketch 2  curvature  normals  color specular  BRDF materials

Normal layer:  NI  NR  NG  NB  NU

Intensity 1: [Slider]

Intensity 2: [Slider]

Display 1:1

Fit to Window

Screenshots

Zoom: [Slider]

Dimension: 1514x907

Background Color: [Color Picker] [Reset]

Take screenshot Take 1:1 snapshot

Print screenshot Create movie

data directory = D:\RICH\Acquisition



Metadata Display Measure Params

Display Settings

Color source: Ambient

Albedo  Ambient

Color layer:  IRG  IGB  RGB  RGU  GBU  
 I  R  G  B  U

Shader: color

color  sharpen  
 shaded  shaded exaggerated  
 sketch 1  sketch 2  
 curvature  normals  
 color specular  BRDF materials

Normal layer:  NI  NR  NG  NB  NU

Intensity 1: [Slider]

Intensity 2: [Slider]

Display 1:1

Fit to Window

Screenshots

Zoom: [Slider]

Dimension: 1514x907

Background Color: [Color Picker] [Alpha]

Take screenshot Take 1:1 snapshot  
Print screenshot Create movie

data directory = D:\RICH\Acquisition



Metadata Display Measure Params

Display Settings

Color source: Ambient

Albedo  Ambient

Color layer:  IRG  IGB  RGB  RGU  GBU  
 I  R  G  B  U

Shader: color

color  sharpen  
 shaded  shaded exaggerated  
 sketch 1  sketch 2  
 curvature  normals  
 color specular  BRDF materials

Normal layer:  NI  NR  NG  NB  NU

Intensity 1: [Slider]

Intensity 2: [Slider]

Display 1:1

Fit to Window

Screenshots

Zoom: [Slider]

Dimension: 1514x907

Background Color: [Color Picker] [Alpha]

Take screenshot Take 1:1 snapshot

Print screenshot Create movie

# Beyond the frame



[Video](#)

[Shows](#)

[TV Schedules](#)

[Shop](#)

[D](#)

Ken Burns effect

THE  
CIVIL WAR  
A FILM BY KEN BURNS

Completely restored  
Aired September 2015 on PBS

MOVING STILLS

[Restoring the Film](#)

[About the War](#)

[Watch Videos](#)

[Photo Gallery](#)

[About the Series](#)

[Classroom](#)

[Shop PBS](#)







▶ ⏪ 🔊 0:00 / 4:20





▶ ⏪ 🔊 0:02 / 4:20









RÉMI MARIE

INGRID HOELZL



TOWARDS A NEW THEORY OF THE DIGITAL IMAGE



*Michelle Obama & Carla  
Bruni Sarkozy*



*The collapse  
of the Milvian  
Bridge from  
the Story of  
Constantine  
series*

*after P.P.  
Rubens*

*Michelle Obama & Carla  
Bruni Sarkozy*