

Educators in the data space: a bottom-up approach



Volute d'acciaio by MONCALVO Riccardo - 1965 - Turin Gallery for Modern and Contemporary Art, Italy - CC BY



Europeana Inclusive engagement guidelines

Europeana encourages inclusive conversation and collaboration during all aspects of the meeting, with the goal of being open, and kind. When in communication with others, we will strive to hold thoughtful and considerate conversations.

This means we ask all conference participants to:

- Listen (and read) with the same energy and focus with which they want to be heard.
- Embrace a learning mindset, be aware of their own biases, and have the courage to be curious about what they do not know or understand.
- Respect all points of view, and hold space for multiple perspectives and lived experiences to influence what we do and why we do it (meaning, we are maintaining a space where participants may be without fear of attack, ridicule, or denial of experience).
- Own any errors they make, apologise, and make amends.
- Maintain that any person has the right to speak up and identify when a boundary has been crossed.

If there is anything you want to flag to the Europeana staff or if you have any questions, please don't hesitate to send a direct message to our colleagues in the chat.

More on [Europeana's Inclusive Engagement Guidelines](#) on Europeana Pro





Agenda

Welcome and Introductions	15:00
<i>Setting the Stage:</i> The Common European Data Space for Cultural Heritage and the ENA Education Community	15:15
<i>Workshop session:</i> Discovering, Defining Priorities and Developing Strategies	15: 30
<i>Plenary Session:</i> Sharing Insights and Building Recommendations	16:30
Closing remarks and Next steps	16:55





Facilitators



Christine Hveding

Ramirez-Corzo
BD coordinator, Education at
EF and Community Manager
of ENA Edu Community



Altheo Valentini

General Manager of EGIaA
Chair of ENA Edu
Community Steering
Group, ENA Member's
Council



Marco Streefkerk

Information Manager at
Anne Frank House and
Steering Group Member of
ENA Edu Community



Georgia Manolopoulou

Cultural Professional,
Museologist, Curator of
Public Engagement,
Ministry of
Culture/Archaeological
Museum Of Patras, Steering
Group Member of ENA Edu
Community, ENA Member's
Council



Raul Gomez Hernandez

PhD candidate at Una
Europa Joint Doctorate in
Cultural Heritage, UCM and
University of Edinburgh,
Steering Group Member of
ENA Edu Community, ENA
Member's Council





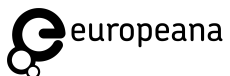
Meet your peers

Briefly introduce yourself

- Name and occupation
- Country you are based in
- Expectations for this workshop
- Nominate the next peer

Setting the Stage:

The Common European Data Space for
Cultural Heritage
and the ENA Education Community



Majad türkiissinise mere ääres by Luts, Karin (autor) - Tartu Art Museum, Estonia - CC0.





What is a data space?

According to the DSSC (Data Space Support Centre) glossary a data space is:

“A distributed structure, defined by a governance framework, that enables trustworthy data transactions between participants while supporting trust and data sovereignty”

Why does a data space exist?

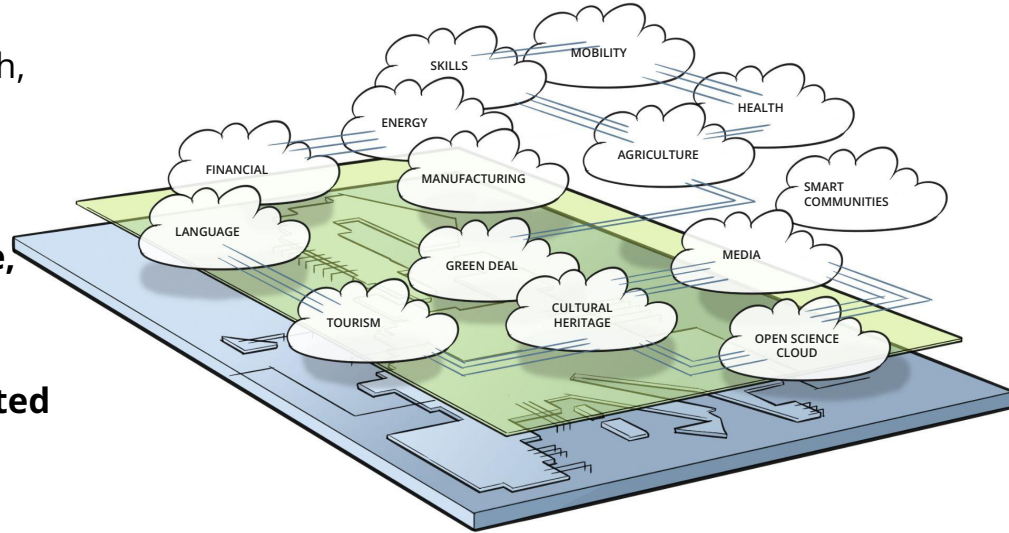
- Data is valuable and its potential lies in **being shared**.
- Sharing data fosters knowledge discovery, collaboration, and greater impact for organisations.
- Data sharing among orgs. raises concerns about trust, privacy and quality

A data space **provides a structured and safe way to share data**



The European Data Strategy and Common Data Spaces

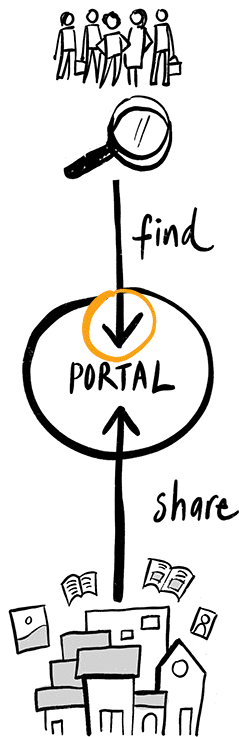
- The EU's Data Strategy recognises data as a **key resource** that drives innovation, growth, and societal progress
- Data is fragmented and governed under different rules; the strategy creates a **single, secure market**
- Common Data Spaces enable **sector-oriented** trusted data sharing under clear rules
- Strengthen competitiveness and public benefit across sectors



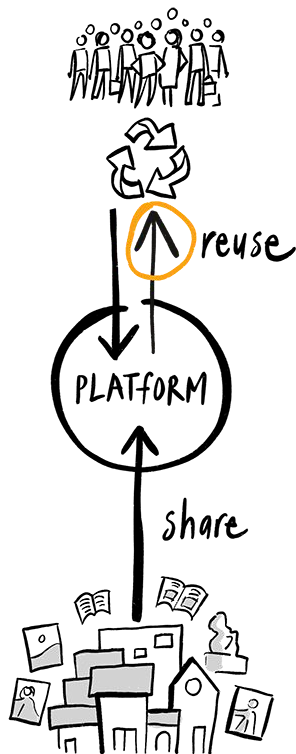
A grayscale photograph of two women sitting at a desk, looking at a laptop. The woman on the left is smiling and has her hand near her face. The woman on the right is looking at the laptop screen. The background is slightly blurred, showing what appears to be a library or office environment with bookshelves.

*We democratise access to
cultural heritage data*

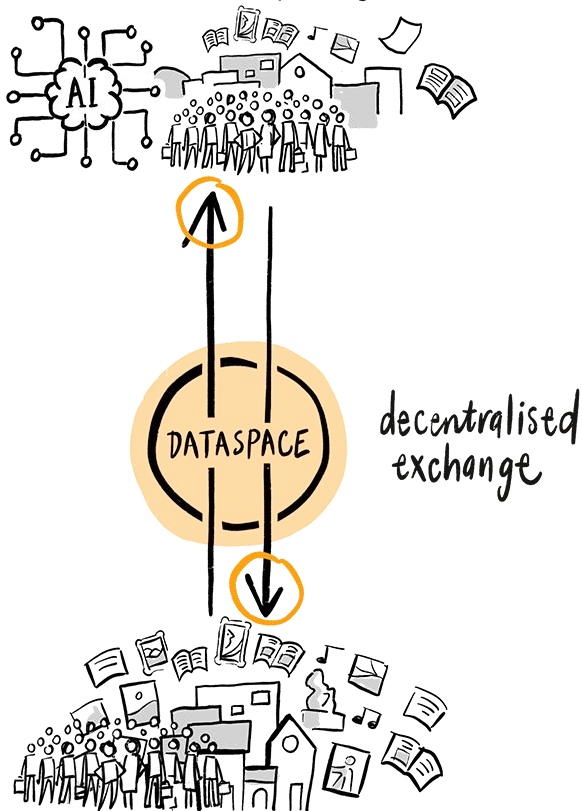
2000-2010



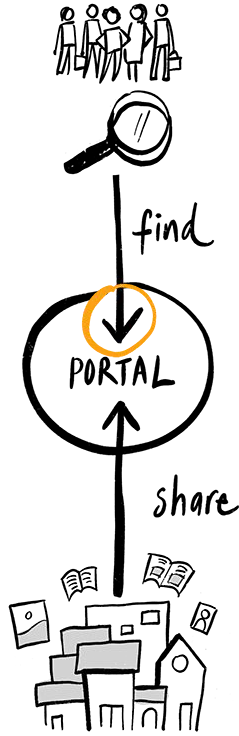
2010-2020



2020-2030

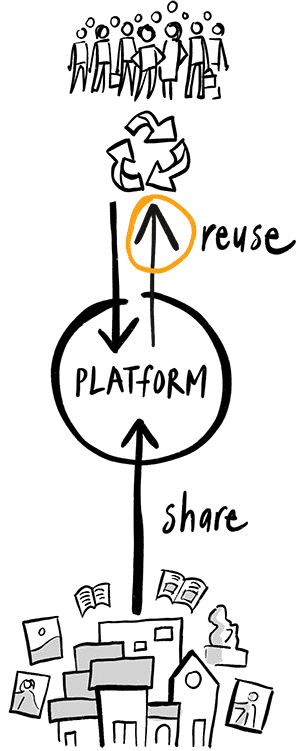


2000-2010



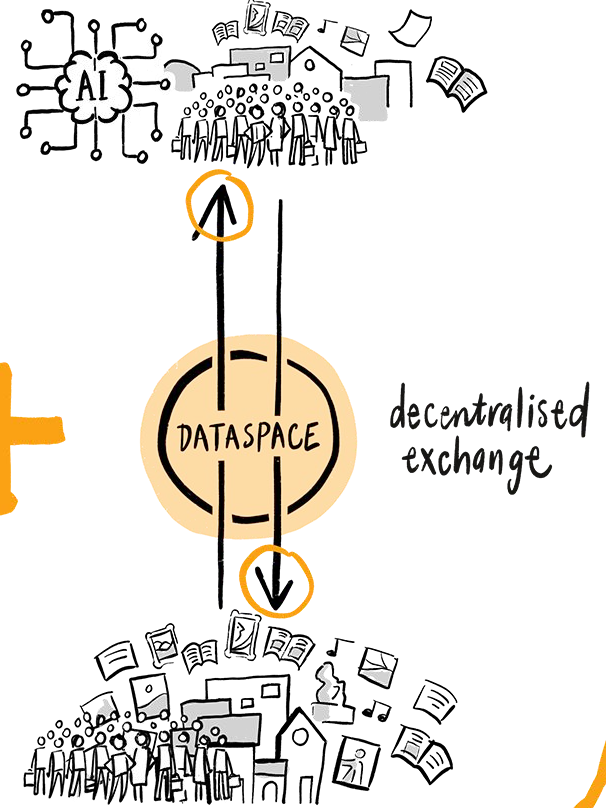
+

2010-2020



+

2020-2030



TRUSTED
GOVERNANCE
MODEL



The common European data space for cultural heritage

What it is

A **decentralised** infrastructure bringing together a vibrant community, tools, trainings, and frameworks to **share cultural heritage data safely** across Europe, while maintaining data owner **sovereignty**.

Who it is for

Cultural heritage professionals
Researchers
Students & educators
Creative professionals
Developers
Cultural organisations
Data providers
Data owners
Intermediaries (e.g. aggregators)
Member states

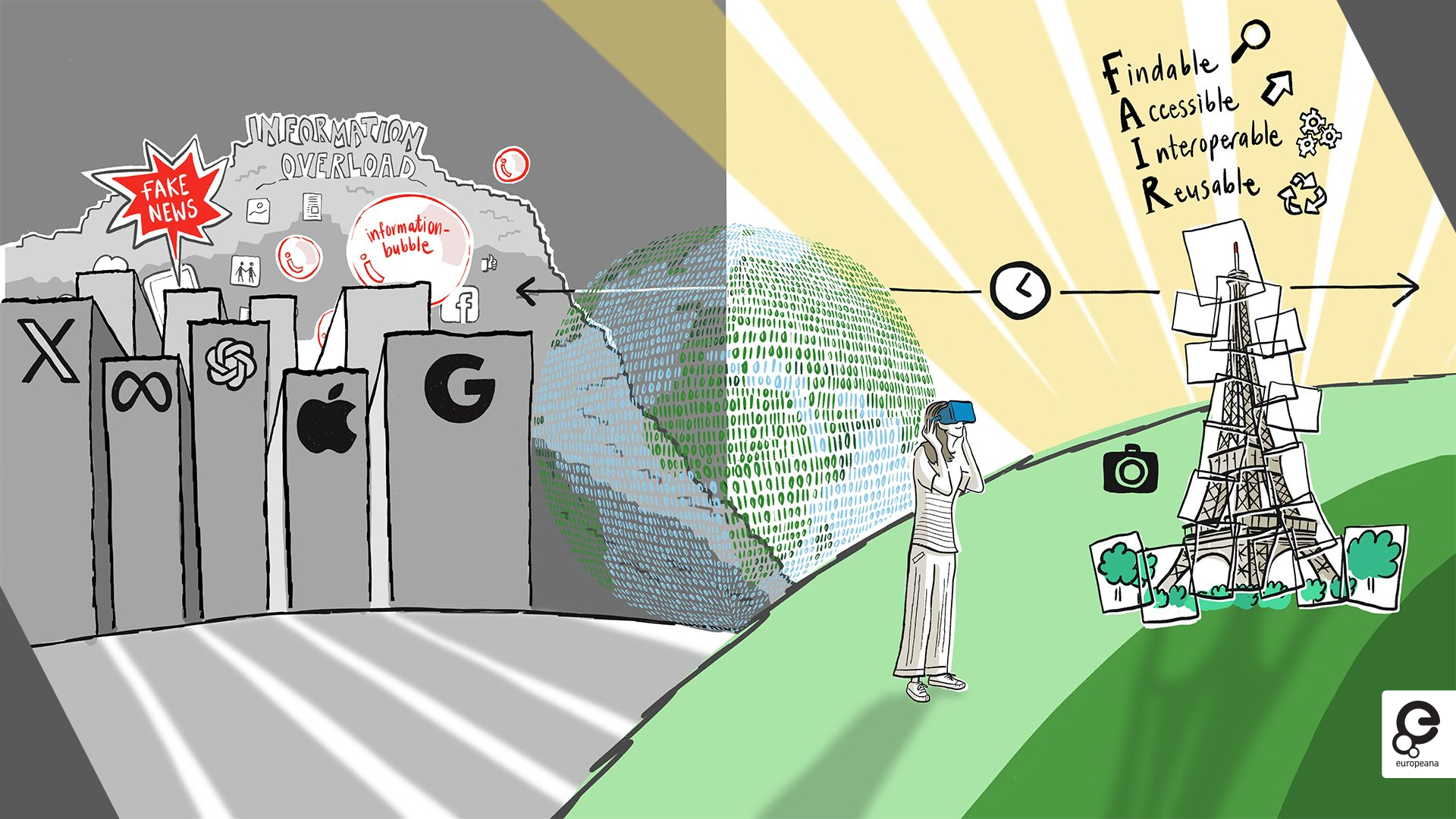
Why it matters

Preserves and protects Europe's cultural heritage

Encourages **reuse** in education, tourism, and the creative industries for **social and economic value**

Builds **trust** and **openness** through **interoperability** and data **sovereignty**





INFORMATION OVERLOAD

FAKE NEWS

information-bubble

Findable
Accessible
Interoperable
Reusable



ENA Education Community

What role do we play?



Workshop session:

Discovering, Defining Priorities and
Developing Strategies



Albertbrücke Dresden, Winter by Gräfe, Roland (Herstellung) (Künstler/in) - State
Association of Fine Arts Saxony eV, Germany - CC BY-SA.

How do you use Europeana's digital cultural heritage data in your work?



Go to menti.com

Use this code: 6552 5402